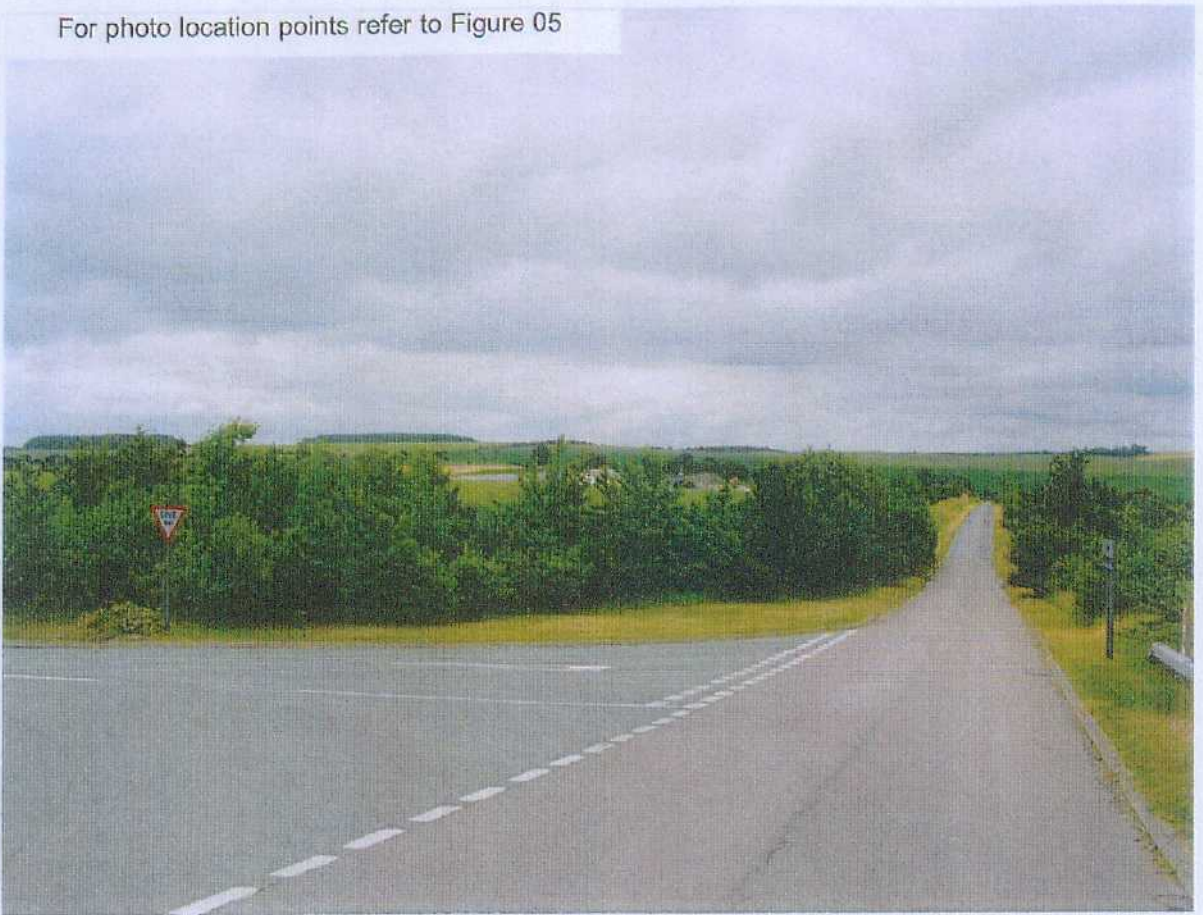
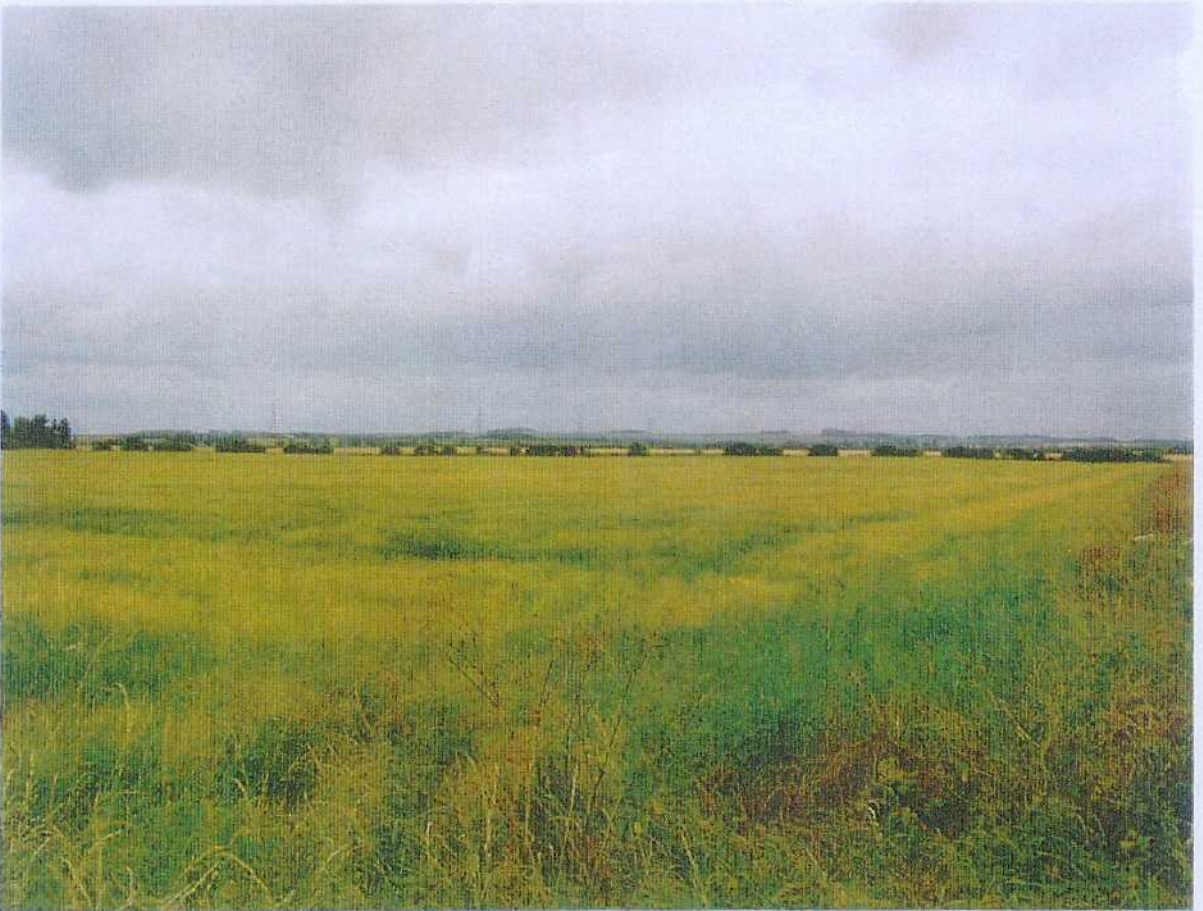


Appendix D



Viewpoint 1 View of site from A11 - Great Wilbraham junction.
Turbines would be very dominant on hillside and ridge



Viewpoint 2 View of site and ridge from
A14 - Great Wilbraham junction.
Turbines would be visible on skyline.



Viewpoint 3 View of site and ridge from Lodge Farm, south of Fulbourn and east of Wandlebury Country Park. Turbines would be dominant on the skyline.



Viewpoint 4 View towards the site from the South, Hadstock (Note Rivey Hill tower, Linton on horizon). Turbines would be visible on skyline.



Viewpoint 5 View towards the site from the east, Broad Road, Little Thurlow Green. Turbines likely to be visible on skyline.



Viewpoint 6 View towards the site from north east from Warren Hill open access area, Newmarket. Turbines would be visible on skyline.



View of Boxworth and Connington site from A14 (southbound)
Application S/1663/04/F (refused) (Note: no location reference on Fig 01).